

A Guide to LMT Lasers by Industry

Our lasers systems can do A LOT (and that's an understatement). With so many options, many of our customers aren't sure which of our laser marking machines are best for their unique application or industry. So, we've compiled this short guide to help point you in the right direction. Keep in mind: by no means is this an comprehensive list of our laser systems, their capabilities or applications. Every one of our lasers can be customized with added components like turntables, robotics, conveyor belts and so much more. So, if you're deciding which laser system would best for your needs, look no further.

eCobalt

A compact, desktop fiber laser marking system that's perfect for small jobs. This is a turnkey machine equipped with dual red aiming beams for easy focus.

Laser Power:

20Watt LMT-MOPA fiber source standard, Optional 30W, 50W

Laser Type:

LMT MOPA, IPG, SPI MOPA

Wavelength:

1064 – 1090nm depending on machine model





eCobalt Class IV

A compact, desktop fiber laser marking system that's designed with a removable scan head for marking larger parts. This is a turnkey machine equipped with dual red aiming beams for easy focus.

Laser Power:

20Watt LMT-MOPA fiber source standard, Optional 30W, 50W

Laser Type:

LMT MOPA, IPG, SPI MOPA

Wavelength:

1064 – 1090nm depending on machine model

eCobalt XL

This large surface fiber laser marking machine can mark a variety of automobile components and metal materials.

Laser Power:

20watt – 100watt

Laser Type:

IPG, SPI MOPA or any fiber laser source of your choosing

Wavelength:

1050 – 1090nm depending on machine model





Cobalt Dominator

A leading system in the industry, this compact version of the Cobalt XL packs a punch. It is highly versatile and customizable. With added components, it can accommodate large parts.

Laser Power:

20watt – 100watt

Laser Type:

IPG, SPI MOPA or any fiber laser source of your choosing

Wavelength:

1064nm kHz: 0-1000kHz, depending on machine model

Cobalt XD

The Cobalt XD is our large format marking machine with a 20" x 20" marking area. It's ideal for large, flat surfaces, color marking, and custom designs for motorcycles and other recreational vehicles.

Laser Power:

70watt – 100watt

Laser Type:

SPI

Wavelength:

1050 – 1090nm depending on machine model





Cobalt XD 3D

Equipped with German optics, MOPA laser source and a 2.5" of dynamically focused Z, the Cobalt XL 3D is ideal for marking on inconsistent and rough surfaces. This ready-to-mark system includes a high end Dell PC with increased graphics capabilities, memory, processing speed, and solid state hard drive. This allows you to directly import 3D .STI files to project your mark with precision.

Laser Power:

70watt – 100watt

Laser Type:

SPI

Wavelength:

1050 – 1090nm depending on machine model

Cobalt Marksman

This is a complete laser marking and engraving system designed specifically for the firearms industry. Our lasers allow you to meet ATF, FFL and NFA compliance for deep serialization. This ready-to-mark system includes a high end Dell PC with increased graphics capabilities, memory, processing speed, and solid state hard drive.

Laser Power:

50Watt EPZ MOPA standard,
Optional 70W – 100W

Laser Type:

SPI

Wavelength:

1064nm



Dominator Marksman

Our industry-leading laser marking system modified for firearms. More compact than the Cobalt Marksman, this machine is versatile and easily customizable.



Laser Power:

50Watt EPZ MOPA standard,
Optional 70W – 100W

Laser Type:

SPI

Wavelength:

1064nm

Cobalt RX Dominator

An annealing system that marks surgical instruments, implants, dental tools and much more without altering the material's surface.



Laser Power:

20watt – 100watt

Laser Type:

IPG, SPI MOPA or any fiber laser source of your choosing

Wavelength:

1064nm kHz: 0-1000kHz, depending on machine model



Cobalt RX XL

The Cobalt RX Dominator's bigger brother! Better for larger medical instruments and surfaces.

Laser Power:

20watt – 100watt

Laser Type:

IPG, SPI MOPA or any fiber laser source of your choosing

Wavelength:

1050 – 1090nm depending on machine model

Cobalt Toolmaker

Equipped with our very own “special formula” that effectively marks carbide without raising the surface for shrink-fit tooling, this system is ideal for the cutting tool industry. And, with a huge 11.41' x 11.41" marking area, you can load and mark a whole pallet of end mills without mechanically moving the part or marking head.

Laser Power:

20-Watt IPG standard, Optional 30W-100W

Laser Type:

IPG standard, SPI-MOPA available or any fiber laser source of your choosing.

Wavelength:

1064nm

Cobalt Gem

With its professional precision and ease of operation, the Cobalt Gem laser marking system allows for intricate and precise markings on precious metals.

Laser Power:

20Watt standard, Optional 30W, 50W

Laser Type:

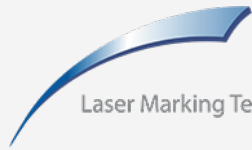
IPG, SPI or any fiber laser source of your choosing

Wavelength:


1064 – 1090nm depending on machine model

Laser Welding Systems

We offer a wide range of customized laser welding systems for use in many industries.



Laser Marking Technologies, LLC.

 1101 W. Sanilac Rd.
Caro, MI 48723 USA

 lasermarktech.com

 989.673.6690