

(Original Instructions)

Operations Guide

eCobalt™

Manual 1.0 • February 2019



Laser Marking Technologies provides dependable, innovative ideas and solutions with unequalled product satisfaction. In this document you will find complete instructions.

Laser Marking Technologies, LLC.

1101 W. Sanilac Rd.

Caro

Michigan, 48723

United States of America

Phone: +1(866).799.0199

Fax: +1(989).673.1655

E-mail:

General information: info@lasermarktech.com

Sales: sales@lasermarktech.com

Engineering: engineering@lasermarktech.com

Technical Support: techsupport@lasermarktech.com

Service / Parts Department: service@lasermarktech.com

Phone: +1(866).799.0199

Fax: +1(989).673.1655

Web: www.lasermarktech.com

Authorized European Representative

Web: www.gsetechnology.com

GSE Technology B.V.

Dubloen 11

5751 PX Deurne

Netherlands

Email:

General Information: info@gsetechnology.com

Sales: leo@gsetechnology.com

Phone: +31(0)493 35 21 21

Fax: +31 (0)493 35 21 25



Last edited: Feb-19

All rights reserved.

No part of this publication may be reproduced, transmitted, transcribed, stored in a retrieval system, or translated into any language, in any form or by any means, electronic, mechanical, photocopying, recording, or otherwise, without prior written permission from Laser Marking Technologies, LLC.

All copyright, confidential information, patents, design rights and all other intellectual property rights of whatsoever nature contained herein are and shall remain the sole and exclusive property of Laser Marking Technologies, LLC. The information furnished herein is believed to be accurate and reliable.

However, no responsibility is assumed by Laser Marking Technologies, LLC for its use, or for any infringements of patents or other rights of third parties resulting from its use.

All other trademarks are the property of their respective owners

Table of Contents

1	INTRODUCTION.....	4
1.1	SYSTEM OVERVIEW.....	4
1.2	AUTHORIZED USE	4
1.3	POINTS OF CONTACT.....	4
2	SYSTEM OVERVIEW	6
2.1	DESCRIPTION OF MACHINE (VIEW A).....	6
2.2	UN-PACKAGING INSTRUCTIONS	7
2.3	MACHINE REQUIREMENTS.....	8
	8
2.4	INITIAL SET-UP INSTRUCTIONS.....	8
2.5	MACHINE START-UP INSTRUCTIONS	12
2.6	OPERATING INSTRUCTIONS.....	12
2.7	SHUT DOWN INSTRUCTIONS	21
3	FAQ / TROUBLESHOOTING	22
4	PREVENTATIVE MAINTENANCE	23
4.1	DAILY TASKS	23
4.2	WEEKLY TASKS	23
4.3	MONTHLY TASKS	23
5	TRANSPORTATION INSTRUCTIONS.....	25
5.1	PACKAGING THE MACHINE	25
6	SPARE PARTS LIST	26

1 Introduction

This guide is intended for use by Plant Managers, Machine Operators and Maintenance Personnel

1.1 System Overview

System:	Details
Manufactured by	Laser Marking Technologies, LLC.
Model	eCobalt
Type	Pulsed Fiber
General Description	Laser marking machine equipped with a manual work piece stage and 163 fl lens on digital galvo head.
Functions	Permanent marking of laser friendly products including metals/ plastics

1.2 Authorized Use



This machines primary function and only authorized use is to safely mark products. This machine is not to be used as an experimental machine.

1.3 Points of Contact

The following is a list of points of contact (POCs) that may be needed by the user for informational and troubleshooting purposes

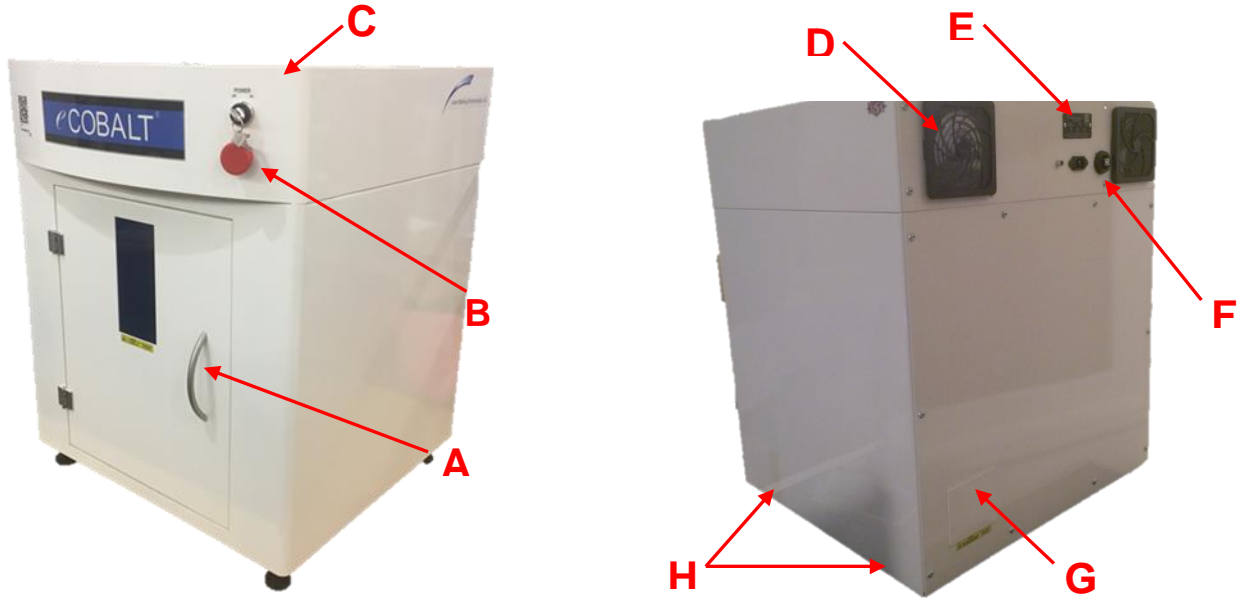
Type	Email	Telephone
General information	info@lasermarktech.com	+1(866).799.0199
Sales	sales@lasermarktech.com	+1(866).799.0199
Engineering	engineering@lasermarktech.com	+1(866).799.0199
Technical Support	techsupport@lasermarktech.com	+1(866).799.0199
Service/ Parts	service@lasermarktech.com	+1(866).799.0199

Type	Email	Telephone
EU General information	info@gsetechnology.com	+31(0)493 35 21 21
EU Sales	leo@gsetechnology.com	+31(0)493 35 21 21

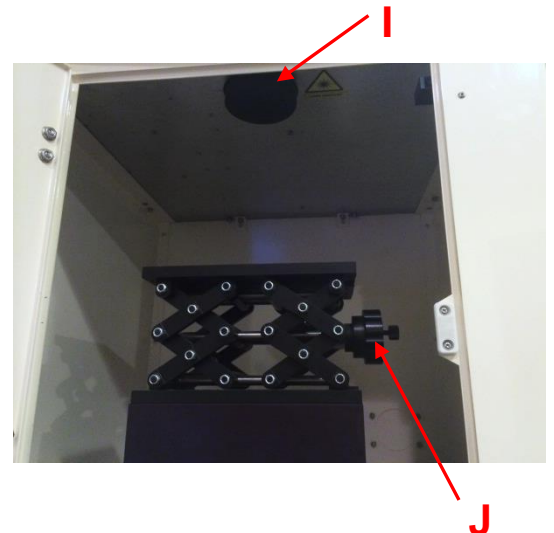
2 System Overview

2.1 Description of Machine (View A)

The following is an introduction to the Cobalt® E Cobalt



- A. Door/ Door Handle
- B. Power Key Switch/E-Stop
- C. Removable access panel for Electrical panel and Laser
- D. Electrical panel fan/filter
- E. Serial Tag
- F. Foot pedal inlet/ USB inlet/Power inlet
- G. Fume Extraction Inlet
- H. Feet (Located respectively on either side)
- I. Galvo Scan Head / Lens
- J. Focus control knob



2.2 Un-packaging instructions



Caution

This equipment is only authorized to be used in a facility with suitable lighting available.



Caution

This equipment is only authorized to be used in a facility where there is no slip or trip hazards present.



Caution

This equipment is only authorized to be used in a facility where proper training in ergonomics has been completed.



Caution

This equipment is only authorized to be used in a facility where proper forklift training has been completed.



Caution

Do not place liquids on any part of the machine or machine components.

Suitable Safety equipment to be worn while un-packaging



Safety gloves must be worn

1. To unload from truck, insert forklift forks into forklift pockets on the crate.

2. Remove Banding

3. Remove all clips as shown on the crate side

4. Remove crate top, then sides

5. Remove stretch film from machine. Do not use a knife of any type

6. Remove all components in cardboard packaging located on top Machine within crate

7. Locate Computer in cardboard packaging

8. Turn on computer to watch the Start Up Video on the desktop

9. Read Safety Manual before continuing in the setup process



Danger of falling objects

Suitable securing and bracing of the table surface using minimum of 300lb capacity holding units must take place before placing the machine atop to avoid the machine from causing harm. Suitable tested and certified lifting equipment must be used at all times.

10. Place the Machine onto a secure bench

2.3 Machine requirements

1. Voltage and Amperage is machine specific, and requirements can be found at the rear of the machine on the Serial Tag at the rear of the machine near the power inlet
2. Customer must supply an electrical receptacle with 220 vac (or 110 vac dependent upon the specified requirement) with a ground and 15 amp service



2.4 Initial set-up instructions



Be aware of risk of electrical shock while performing the following actions, must take proper precautions.

1. Plug main control electrical cabinet power cord into a customer supplied receptacle with a ground



2. Remove the lens cap



3. In the event of removal of this panel (labeled "Class 4 if open"), a risk assessment must be provided by the end user to eliminate the possibility of injury from class 4 invisible laser radiation. Additional guarding may have to be provided to ensure safety from the class 4 radiation



4. Install fume extractor system's hose to the inlet of the machine, and open the gate valve by sliding it upward

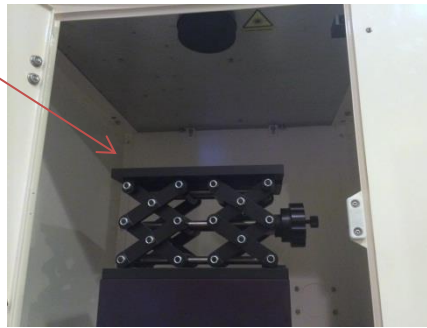


Fume Extraction Requirements: Minimum recommended airflow/static pressure - 223cfm/96mbar at machine.



If evidence of a lack of routine maintenance is shown to have had a part in a disruption of machine operation, such as inadequate fume extraction during operation, the machine's warranty will be voided. Please ensure a maintenance schedule is created and applied immediately after receiving training on the machine.

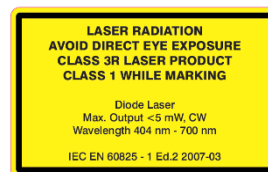
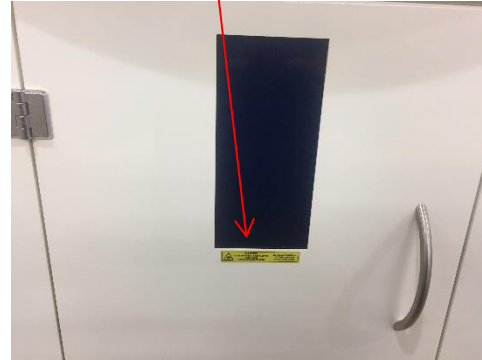
5. Place the fume extraction nozzles as near to the process area as possible without obstructing the beam



6. Plug in PC, and install USB cable between CPU and Machine



7. Ensure all warning labels and serial tag are in position and readable as described below



2.5 Machine start-up instructions



- Depression of the E-stop at any time will disconnect the power supply to the laser and control components, ceasing operation and removing the possibility of harm caused by the laser.

1. Energize main control electrical cabinet by rotating the red handle of the E-Stop located on front of main control electrical cabinet clockwise (the e-stop will no longer be depressed), and then turn the Main Power Key Switch clockwise



2. Turn on PC
3. Ensure Lens Cap is off, and all labels are present as described in the setup instruction above

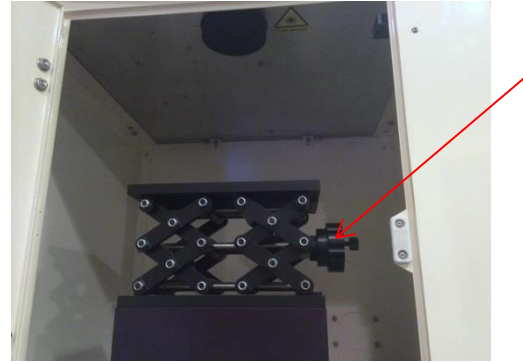
2.6 Operating Instructions



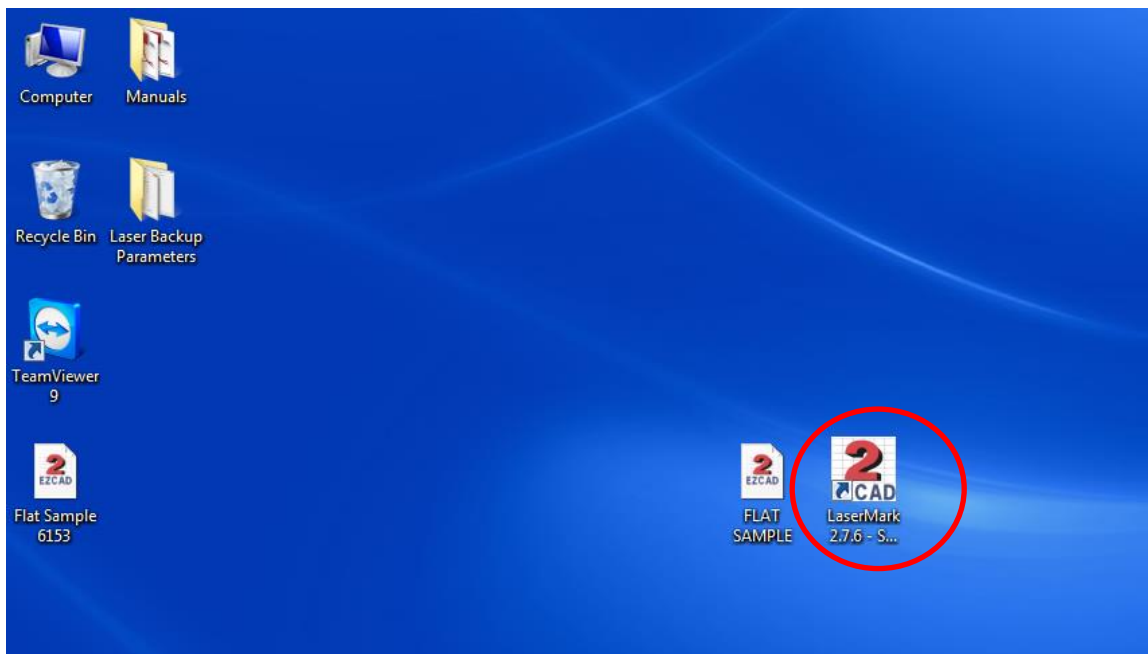
- This machine is not intended for use other than described.
- This machine can mark material such as steel, aluminum, ceramic, carbide, rubber, titanium, brass, copper and laser friendly plastics.
- Do not operate this equipment until you are properly trained to use the equipment.
- This machine is below 70dba and does not require any hearing protection.

1. Ensure the machine is on and USB cable is plugged in
2. Place the part to be marked inside of the marking area (110mm square beneath the scan head is standard). A sample part and program has been provided with the corresponding serial # of the machine for an example marking

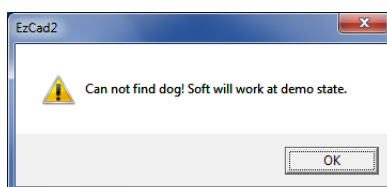
3. Use the supplied focal stick with the machine's corresponding serial # to set the focal distance for the size part to mark. Place the focal stick between the marking surface of the part, and the galvanized plate up by the lens. Use the control knob on the right side of the lab jack to adjust the position of part in the Z plane



4. On the desktop of the computer, double click the "LaserMark" software icon



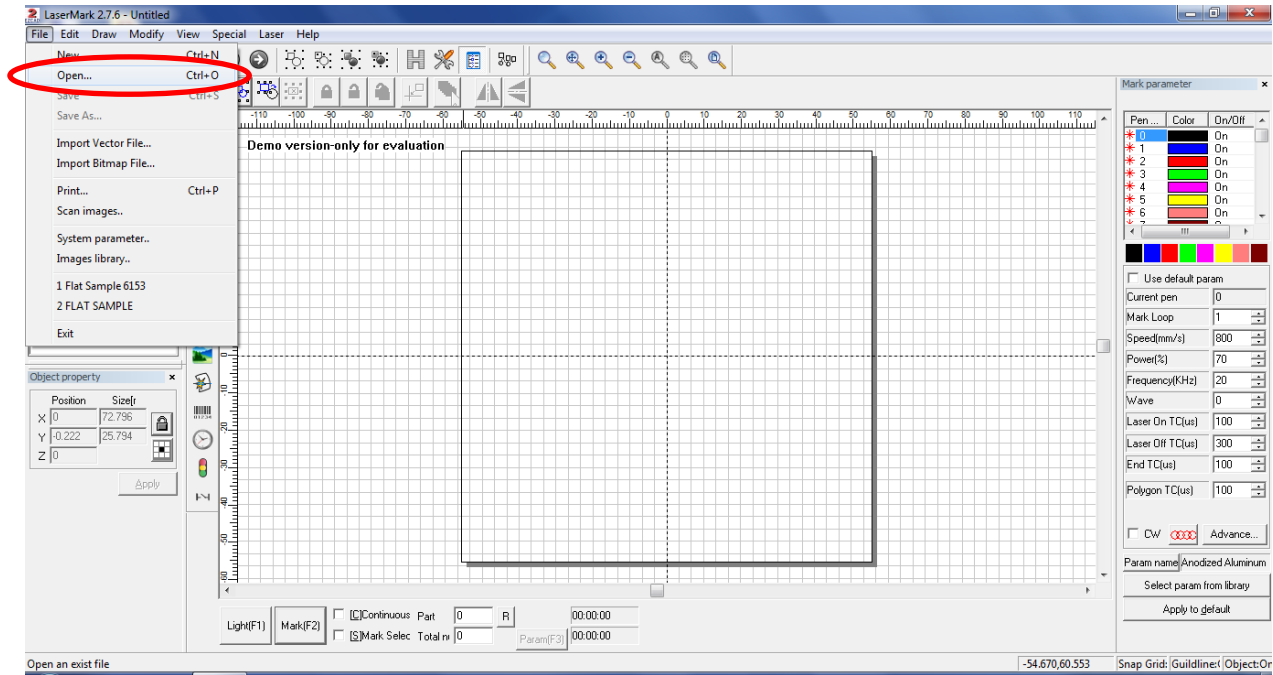
5. If an error appears, the machine is most likely turned off, or the usb is unplugged



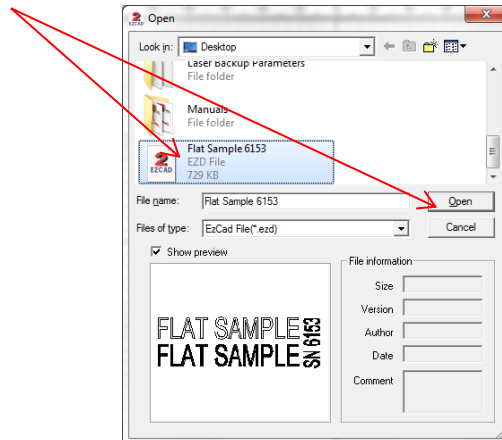
6. Enter the program in the “Designed” level of access (this currently requires no password), click “ok”



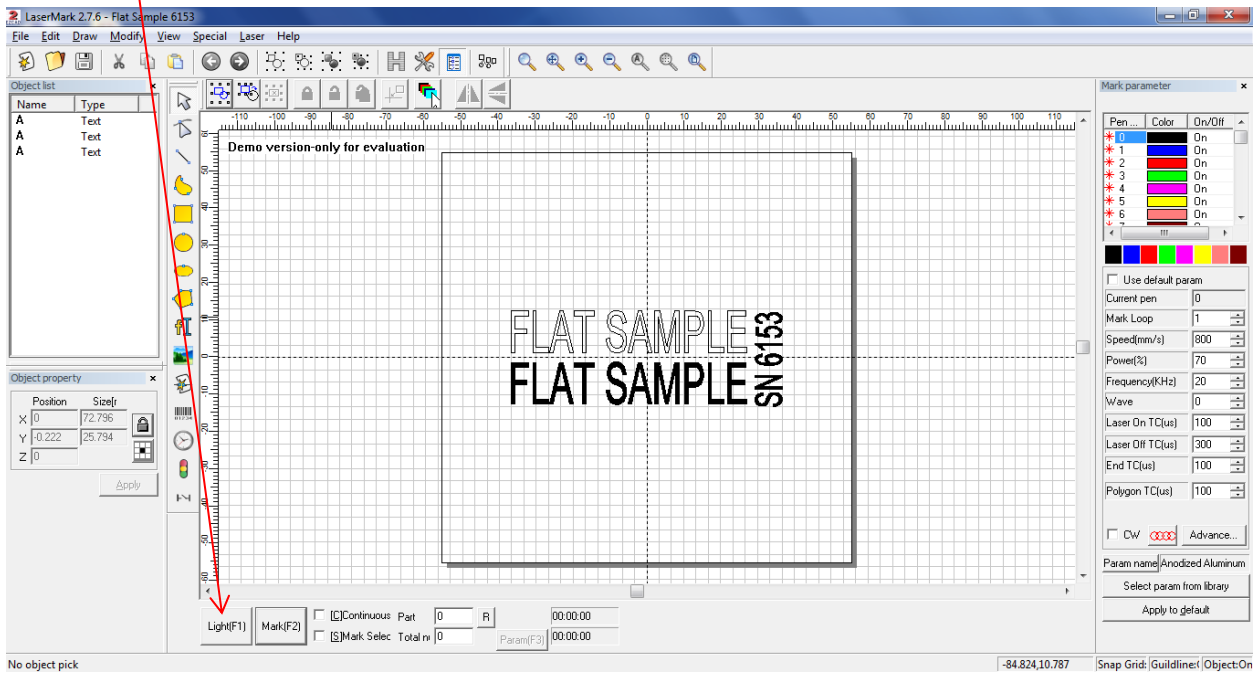
7. Open a file to mark by clicking “file”, then “open”



8. Select the desired file, and then click “open”



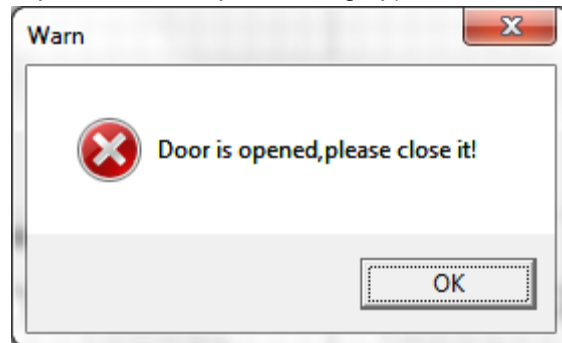
- Once open, click the “light” button or hit “F1” on the keyboard to preview the mark using the red beam



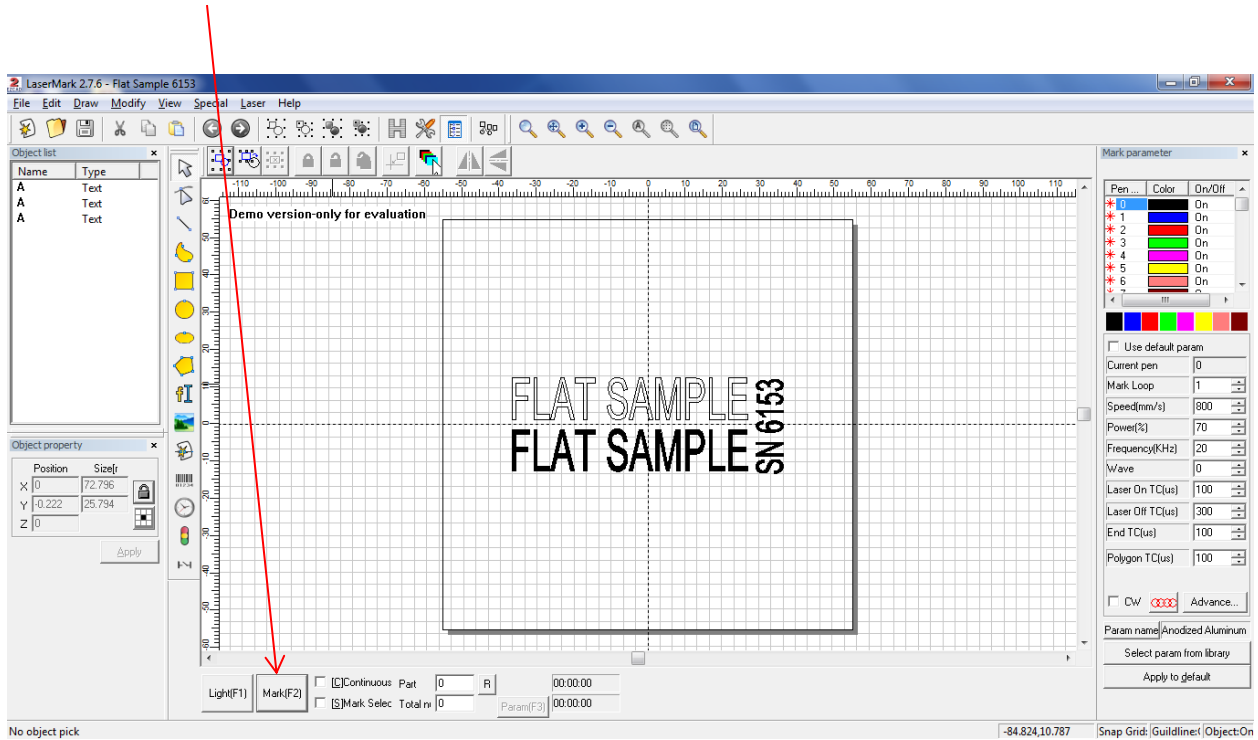
- The screen will display that you are “lighting”, move the part, or adjust the position of the file using the arrow key to achieve proper placement of the marking. Hit the “esc” key or click “Stop” when finished



- Close the front door completely before marking. An error will be produced if the door is opened at any time the mark is being commanded. (must be cycled open to closed upon starting up)



12. Click “Mark” or hit the “F2” key on the key board to start the marking



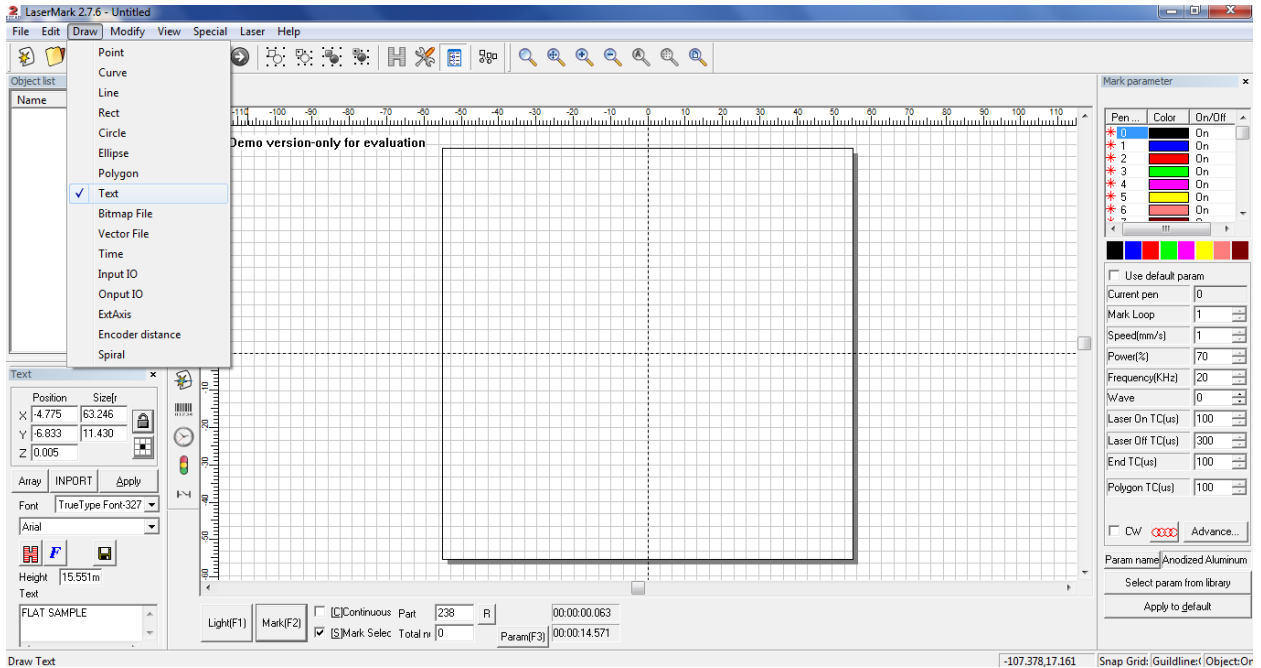
13. The marking can be viewed through the safety glass, and the text “Marking” will be displayed through the duration of the mark. When complete, the “marking” prompt will be gone, and the door can be opened for inspection of the part



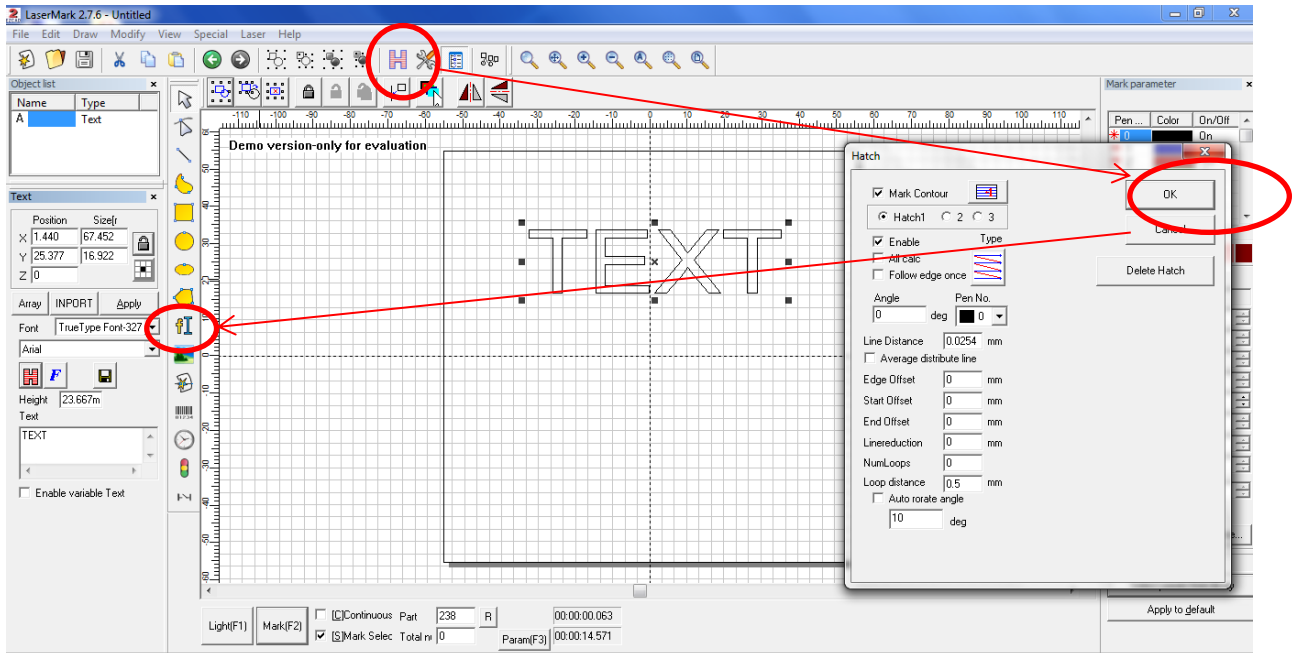
Dependent upon the material and duration of the marking, the marking surface or part may be hot—use caution in handling the processed parts.

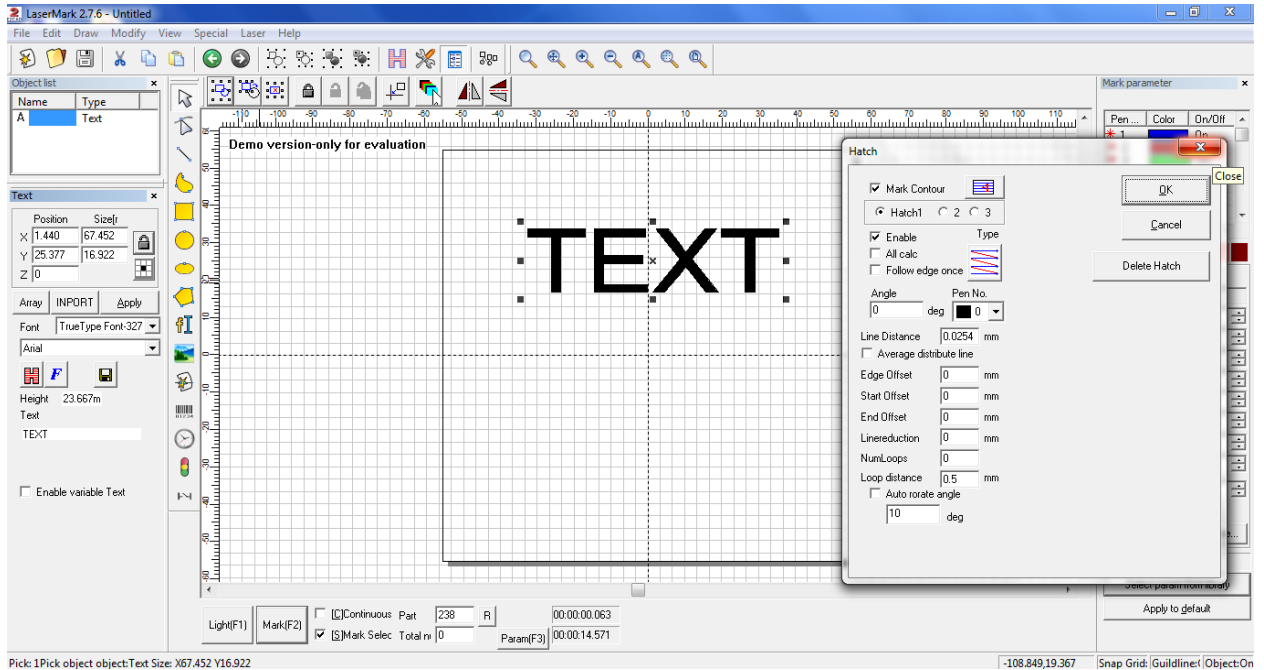


14. To create a new text, click “draw”, then text, then place the cursor anywhere in the marking area and left click the mouse

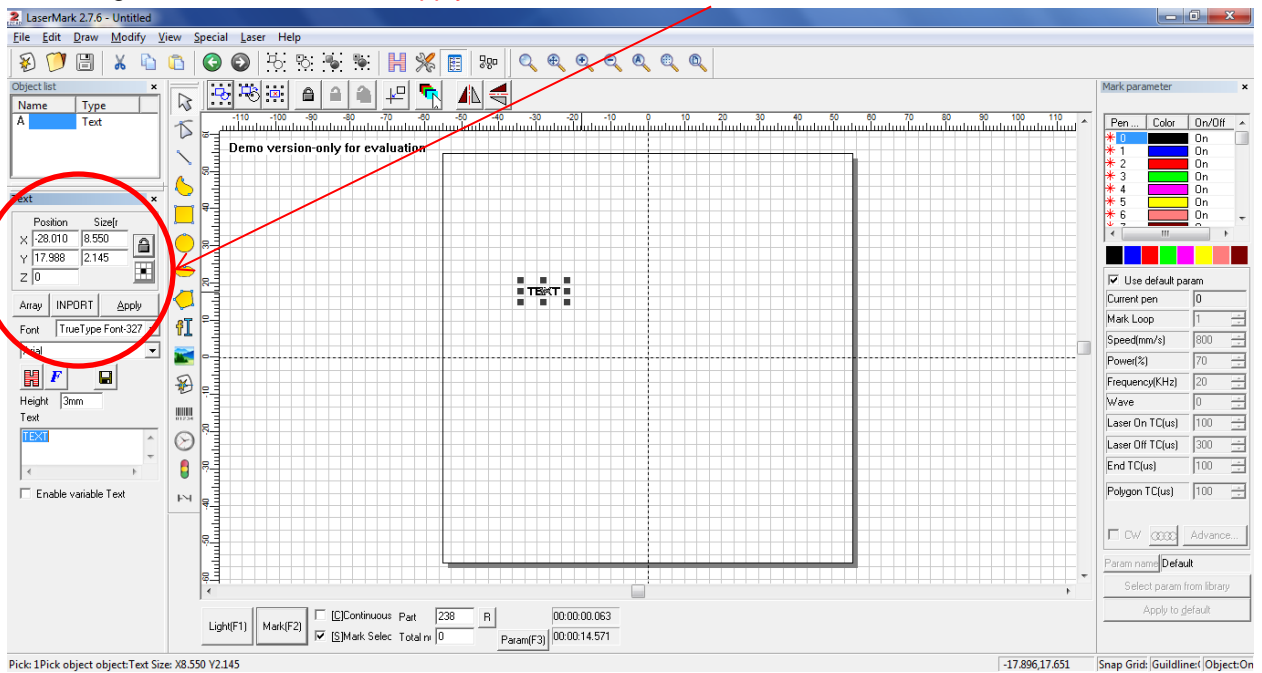


15. To “hatch” or create a fill in a text or any vector image- select the image, then click the “H” button to bring up the menu, once settings are complete, click ok to apply the change (click apply after making any change to the object’s attributes)

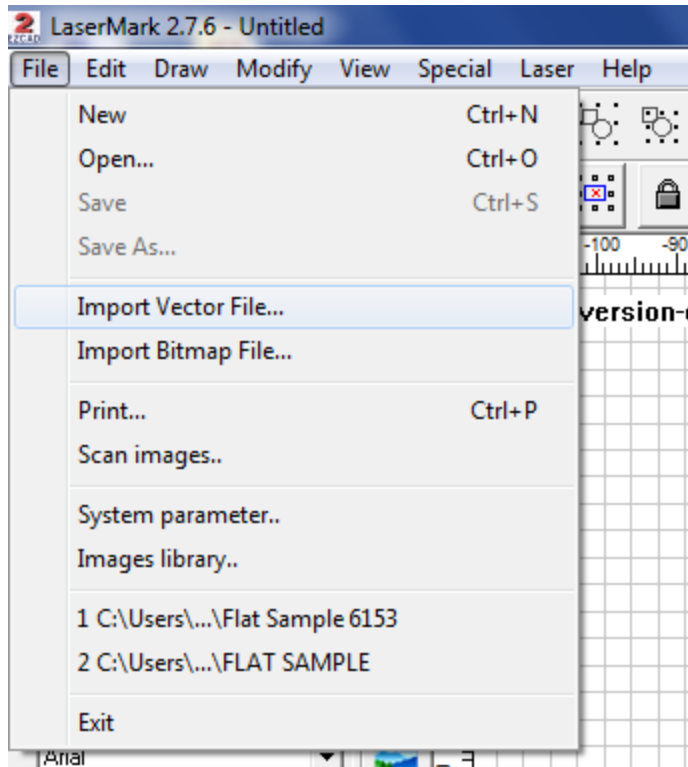




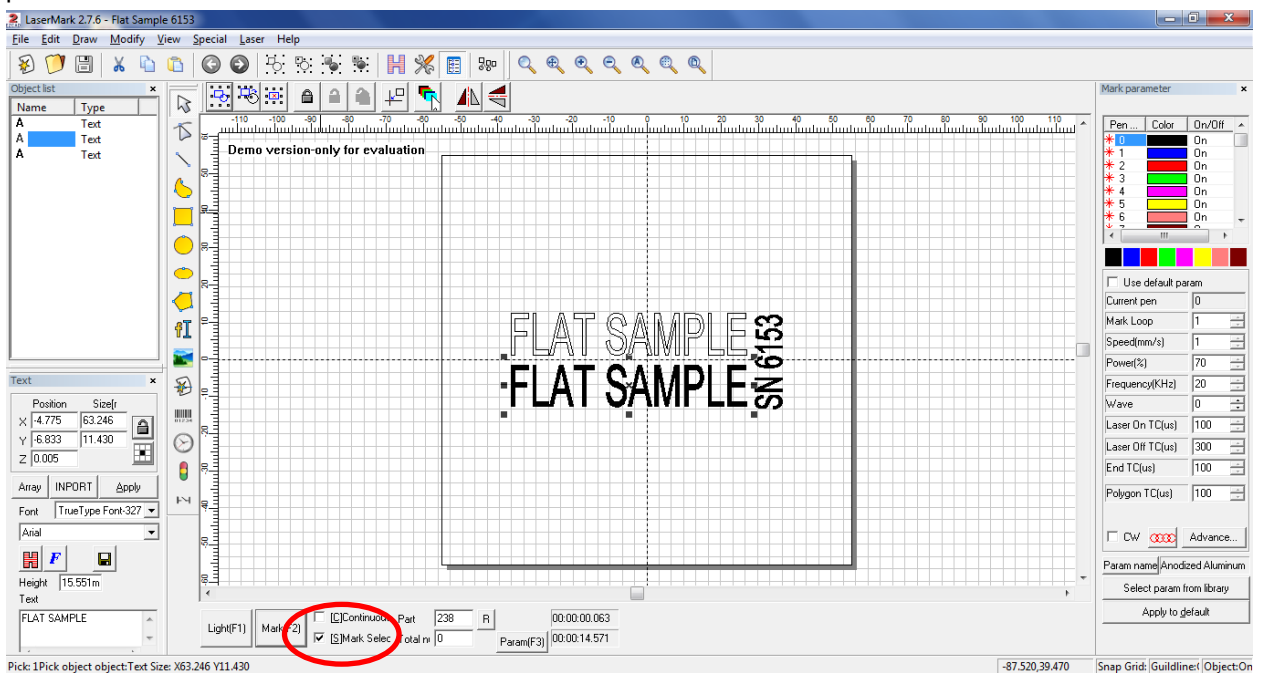
16. To modify text's content- change the content within the "Text" box, also apply the desired font style and sizing within this area. Click "Apply" when finished



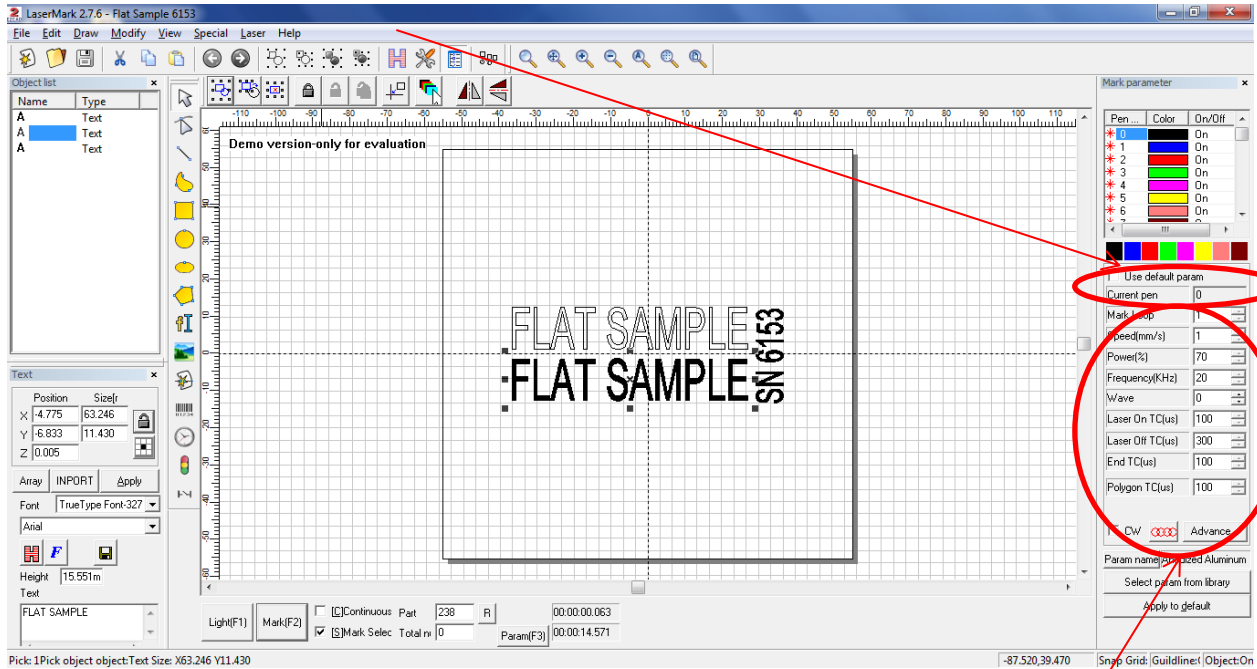
17. To import a vector file for marking - click “File”, then click “Import vector file”, and choose the desired file of the available Vector file types



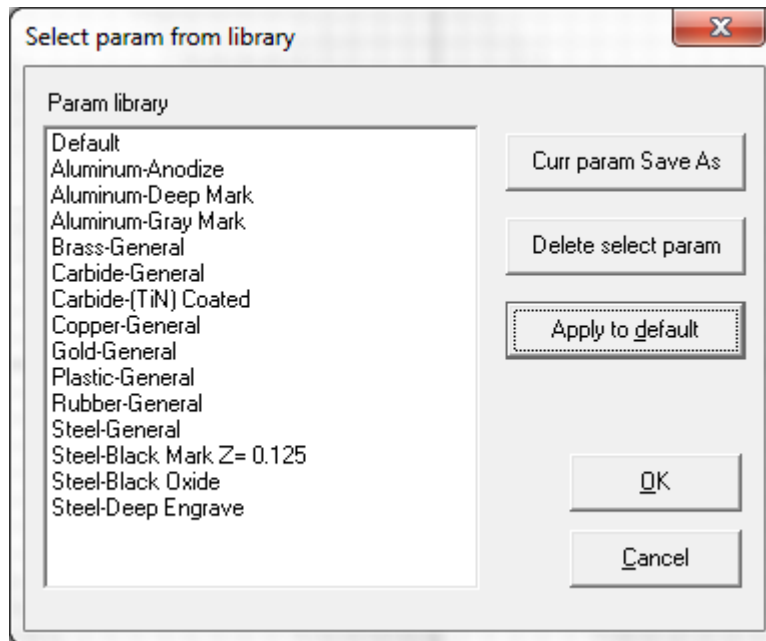
18. To only mark or preview a selected portion of the marking file, place a checkmark in the “Mark selected” box near the Mark Button and select the desired portion of the file, then click f1 or f2 to preview or mark that selection



19. To change the marking parameters, modify the values on the right hand side of the marking software. The horizontal color selection bar can apply a different set of parameters to a marking object by changing the color of it on the screen (so you can visually reference a different parameter setting by looking at the screen, pen assignments have a # and a color—0 through 7 are represented on this bar). Simply click the object, then click the color on the horizontal bar to change it's pen assignment



19a. General Starting Parameters have been created for this marking system and can be accessed by clicking the “Select Param from Library” Button and selecting the desired material (these are “starting point” parameters, and may need the values modified for specific process specifications). Select the desired material, then click “ok”. Parameters can also be saved for later use in this menu



20. For detailed descriptions of the software's capabilities and layout, please refer to the "LaserMark Software Manual" provided on the computer's Desktop and Master Cd.

2.7 Shut Down Instructions



Never leave a machine unattended in the process of marking.

1. Save current work, and close out of the software by clicking the red "x" in the top right hand corner of the software.
2. Turn the key switch counter clockwise to turn power off to the machine. (key is removable in the "off" position)



3 FAQ / Troubleshooting



We've answered some of the most frequently asked questions we have received. If there's anything else you want to know, or for additional explanation, please [submit a question](#).

Click link below to be connected to our FAQ page. Then type "1111" into the password section.

<http://lasermarktech.com/customer-access-area>

4 Preventative Maintenance

Tasks can generally be grouped into daily, weekly and monthly schedules.

Depending on the circumstances, additional tasks may need to be implemented, and some tasks may occur more or less often or not at all.



All maintenance should be performed using suitable lockout – tag out procedure and equipment

Fume Extraction Requirements: Minimum recommended airflow/static pressure - 223cfm/96mbar at machine.



If evidence of a lack of routine maintenance is shown to have had a part in a disruption of machine operation, such as inadequate fume extraction during operation, the machine's warranty will be voided. Please ensure a maintenance schedule is created and applied immediately after receiving training on the machine.

4.1 Daily Tasks

Perform these tasks on a daily basis:

1. Remove any dirt or debris on fixture or in area.
2. Inspect the lens surface for dust or debris—remove debris with gas duster
3. Ensure Fume extraction nozzles are in a suitable position for maximum removal

4.2 Weekly Tasks

Perform these tasks on a weekly basis:

1. Check fume extraction system for adequate flow—replace/ clean filters as necessary or recommended by the manufacturer.
2. Inspect lens for any film caused by the process or surrounding environment—clean as necessary (without removing the lens) with >91% Isopropyl alcohol or equivalent and lint-free laser optics cleaning tissues

4.3 Monthly Tasks

Perform these tasks on a monthly basis:

1. Check power cord for damage or wear—replace as necessary
2. Check seating of usb connections—clean connection areas as necessary, replace cord as necessary.
3. Ensure proper motion of the Lab Jack—clean/grease as necessary
4. Check/Clean electrical panel vents

5. Inspect Laser fans for dust - Clean with compressed gas duster with power off.
6. Inspect Work area for dust - Clean with compressed gas duster or a damp cloth with power off.

5 Transportation Instructions



This equipment is only authorized to be moved by personnel that have been properly trained in forklift use.

5.1 Packaging the Machine

1. Place back into the supplied crate, using the 8 supplied foam blocks (cardboard spacers to top)
2. Place sides back onto crate, install clips along bottom and sides
3. Place computer, in its box, on top of the machine (between all foam spacers) --also box foot pedal, and loose components to place next to the computer box
4. Check to ensure the keys, focal stick, machine power cord, computer, computer power supply and cord, sample tag, foot pedal, and master cd are all included in the crate
5. Place the top on the crate, and replace the clips along the top of the crate.
6. Band the crate in each direction, and place labels for tipping, impact, and do-not-stack

6 Spare parts list

This is a list of spare parts recommend to be kept on hand to maintain proper operation of this machine.

Cobalt eCobalt

QTY	DESCRIPTION	PART #
1	Scan head	LMT-SH-GO7
1	Scan Head power supply	included in scanhead
1	FL 163 Lens	LMT- 163FL
1	FL 163 Cover Lens	LMT-CL
1	Door Safety Glass	LMT-SG
1	RIGHT ANGLE ACTUATOR KEY	HS9Z-A62
1	Door Close Magnetic Catch	6680A12
1	6FT Computer Power Cord 16/3 SJTW 110v to iec-320 C-13 connector	2724.072.989
1	USB Control Board – Fiber Lite	LMC-Fiber
1	IDEC Safety Switch	HS6B-03B03
1	24VDC power supply	S-320-24
1	5VDC 3amp power supply	RS-15-5 or RS-25-5
1	Quick Start Foot Pedal	7717K14
1	Key switch	HW4K-2BF10
1	USB cable	ECUSBAB-2M
1	E-Stop switch	GCX1131



THANK YOU
FOR CHOOSING LMT AS YOUR
LASER MARKING PARTNER

For technical support call
TOLL FREE (866)-799-0199
Ask for technical support.