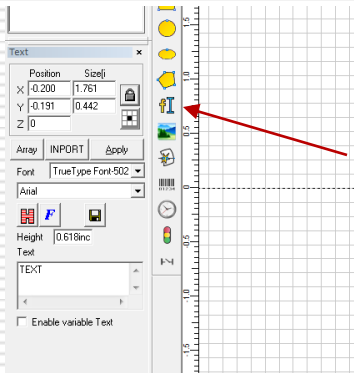




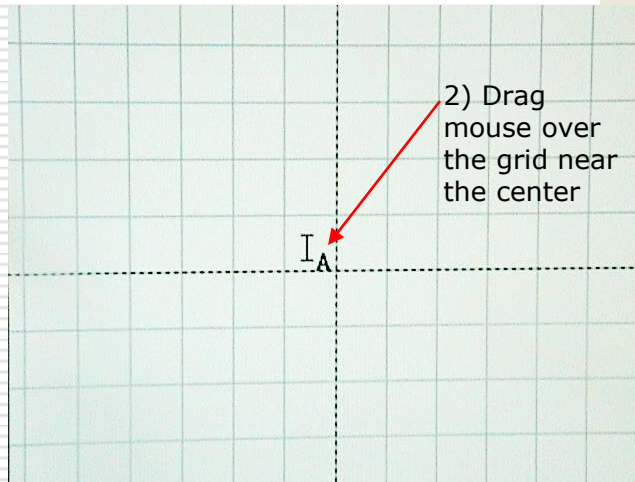
Laser Marking Technologies

*Instructions on how to get information from a
Excel file:*

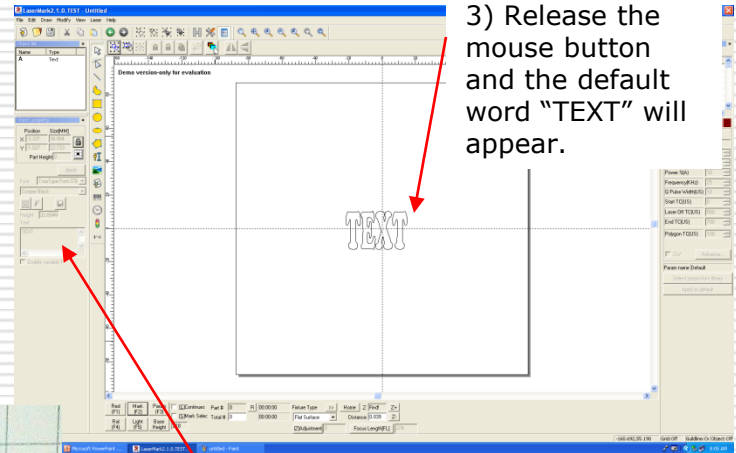
Enter a simple line of text



1) Select the "Draw Text" Icon



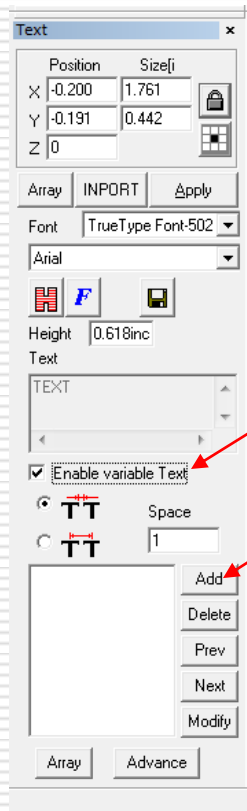
2) Drag mouse over the grid near the center



3) Release the mouse button and the default word "TEXT" will appear.

4) The text can then be modified here. (NOTE: You must select the "apply" Icon after any changes)

Enable Variable Text



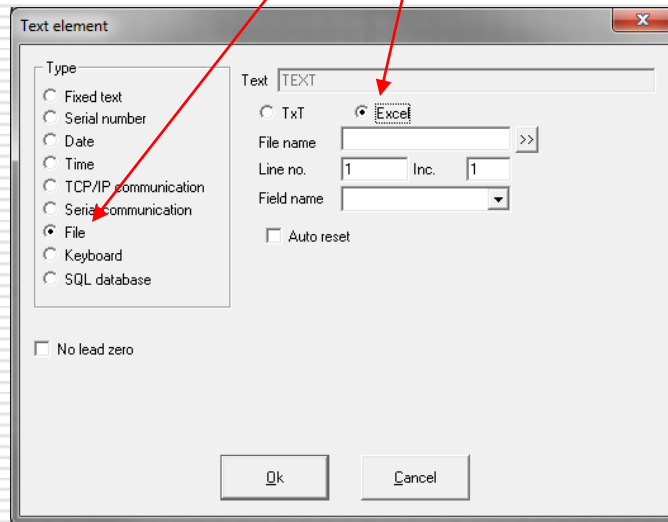
1) Select Enable variable text.

2) Then Select add.

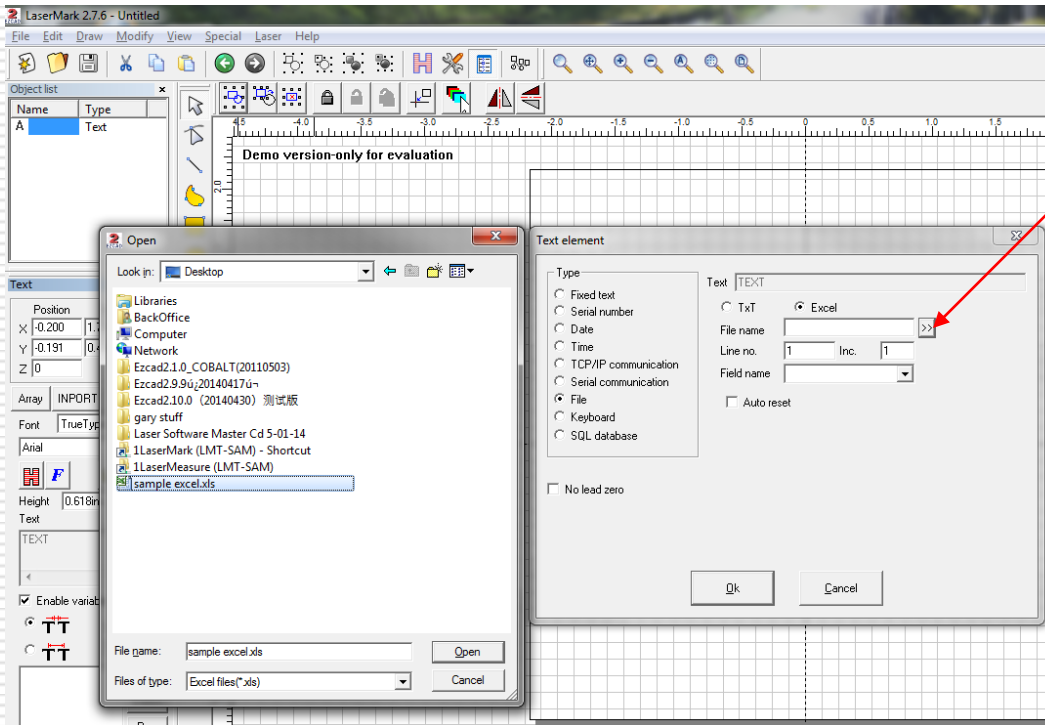
Setting the text element

3) Select file for the type.

4) Select Excel.

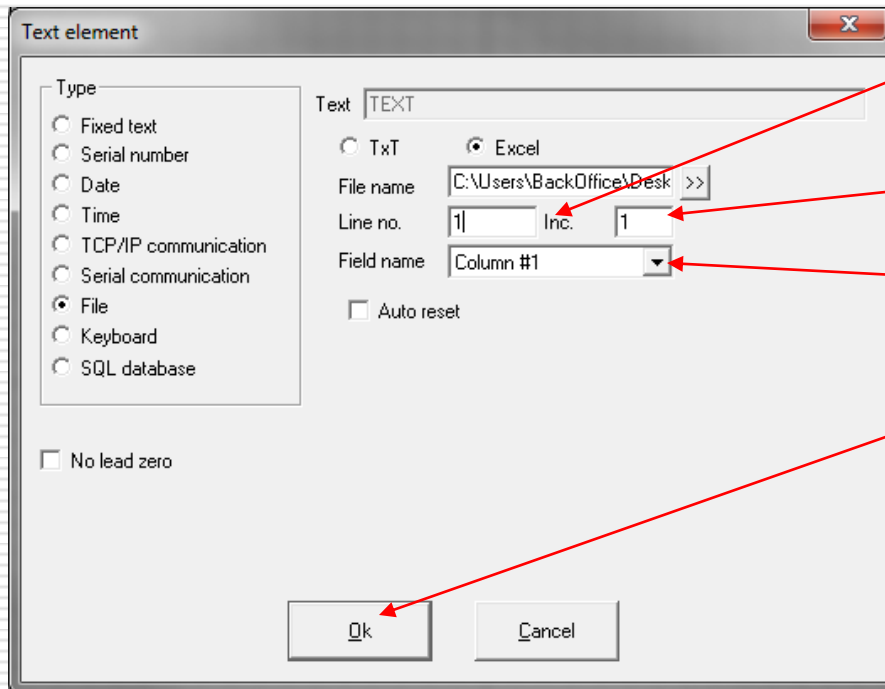


Select a file.



5) Select a .xls file that you want the data to pull from.

Select a cell



6) Select which row you want the data to pull from.

7) Enter the increment amount.

8) Select which column you want the data to pull from.

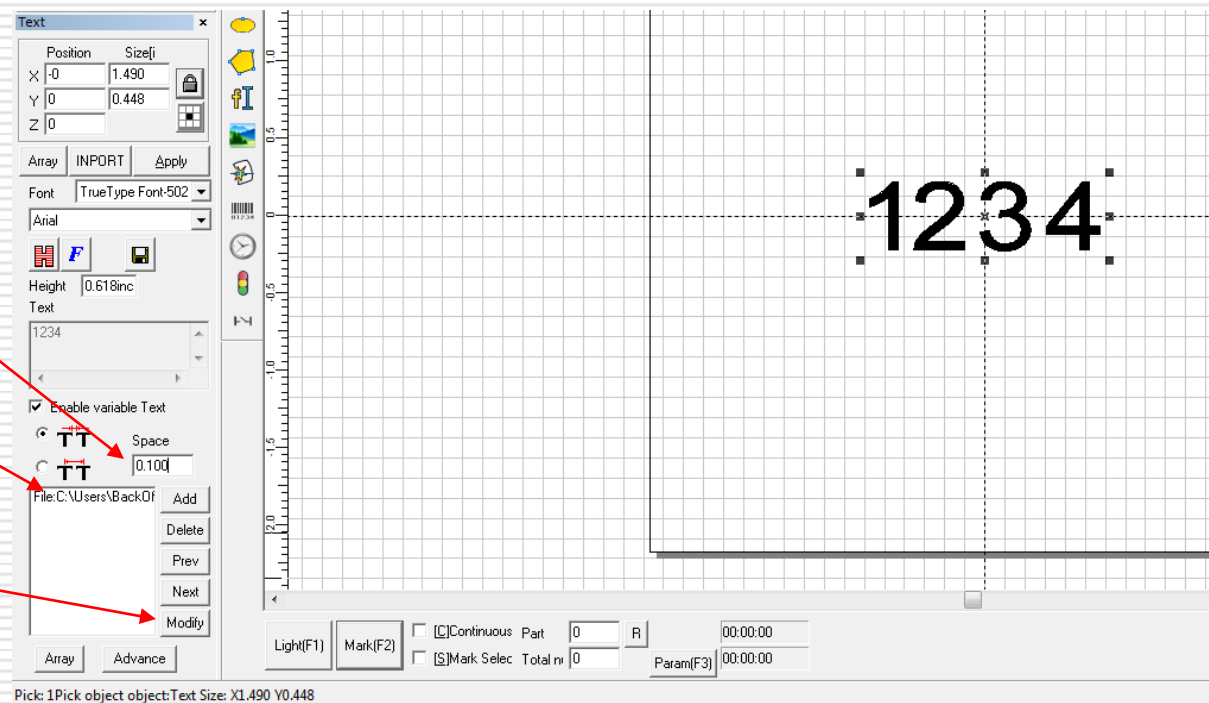
9) Then select ok.

To modify variable text

10) Adjust character spacing to your preference.

10) Select the text object.

11) Select modify.



Thank you for choosing LMT for your laser needs!

If you require further assistance please feel free to contact us per the methods listed below.

Web: www.lasermarktech.com

LASER MARKING TECHNOLOGIES

1101 W. Sanilac Rd. Caro, Michigan 48723 USA

E-mail:

General information: info@lasermarktech.com

Sales: sales@lasermarktech.com

Engineering: engineering@lasermarktech.com

Technical Support: techsupport@lasermarktech.com

Service / Parts Department: service@lasermarktech.com

Phone: 866.799.0199

Fax: 989.673.1655